



MetroWest+

Portishead Branch Line (MetroWest Phase 1)

TR040011

Applicant: North Somerset District Council

2.15 to 2.17 - Trinity Footbridge plans: Proposed General Arrangement Plan; Proposed Landscaping General Arrangement Plan; Electrical Layout General Arrangement

The Infrastructure Planning (Applications: Prescribed Forms and Procedure) Regulations 2009, regulation 5(2)(o)
Planning Act 2008

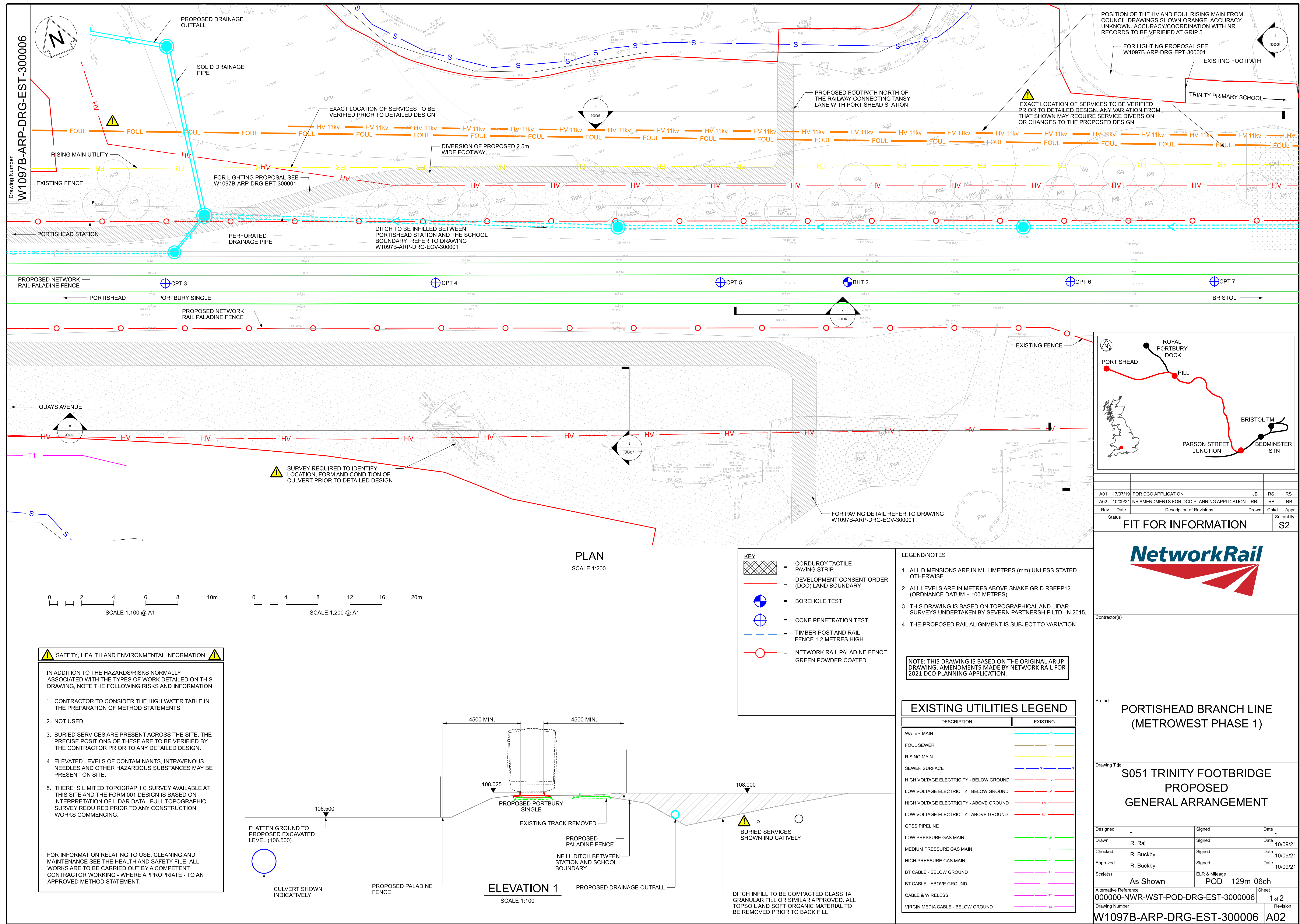
Author: ARUP / Network Rail

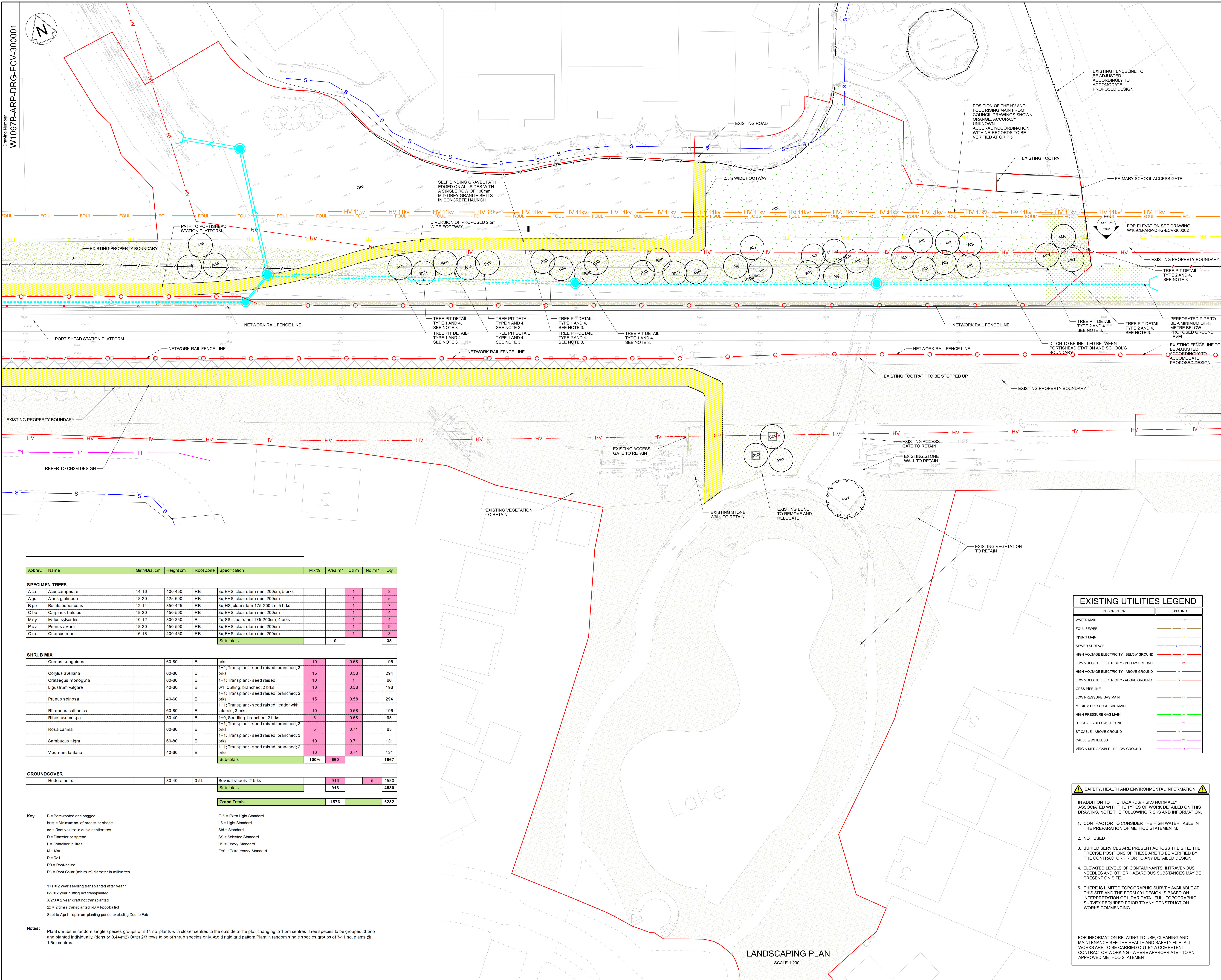
Date: September 2021



Document Index

Version	Date	Status of version	Document Index	Document Revision	Changes
1	19 November 2019	Application	<p>2.15 S051 Trinity Footbridge Proposed General Arrangement Plan - W1097B-ARP-DRG-EST-300006 Rev A01</p> <p>2.16 S051 Trinity Footbridge Proposed Landscaping General Arrangement Sheets 1 and 2 - W1097B-ARP-DRG-ECV-300001-2 Rev A02</p> <p>2.17 S051 Trinity Footbridge Proposed ElectricalLayout General Arrangement - W1097B-ARP-DRG-EPT-300001 Rev A01</p>	-	-
2	20 September 2021		<p>2.15 S051 Trinity Footbridge Proposed General Arrangement Plan - W1097B-ARP-DRG-EST-300006 Rev A01</p> <p>2.16 S051 Trinity Footbridge Proposed Landscaping General Arrangement Sheets 1 and 2 - W1097B-ARP-DRG-ECV-300001-2 Rev A02</p> <p>2.17 S051 Trinity Footbridge Proposed ElectricalLayout General Arrangement - W1097B-ARP-DRG-EPT-300001 Rev A01</p>	<p>A02</p> <p>A03</p> <p>A02</p>	<p>Trinity Primary School Bridge and associated works removed.</p> <p>Trinity Primary School Bridge and associated works removed.</p> <p>Trinity Primary School Bridge and associated works removed.</p>





Abbrev.	Name	Girth/Dia. cm	Height cm	Root Zone	Specification	Mix %	Area m ²	Ctr m	No./m ²	Qty
SPECIMEN TREES										
A ca	Acer campestre	14-16	400-450	RB	3x EHS; clear stem min. 200cm; 5 brks			1		3
Agu	Alnus glutinosa	18-20	425-600	RB	3x EHS; clear stem min. 200cm			1		5
B pb	Betula pubescens	12-14	350-425	RB	3x EHS; clear stem 175-200cm; 5 brks			1		7
C de	Carpinus betulus	18-20	450-500	RB	3x EHS; clear stem min. 200cm			1		4
M sy	Malus sylvestris	10-12	300-350	B	2x SS; clear stem 175-200cm; 4 brks			1		4
P av	Prunus avium	18-20	450-500	RB	3x EHS; clear stem min. 200cm			1		9
Q ro	Quercus robur	16-18	400-450	RB	3x EHS; clear stem min. 200cm			1		3
Sub-totals							0			35
SHRUB MIX										
	Cornus sanguinea	60-80	B	brks	10		0.58			196
	Corylus avellana	60-80	B	1+2; Transplant - seed raised; branched; 3 brks	15		0.58			294
	Crataegus monogyna	60-80	B	1+1; Transplant - seed raised	10					66
	Ligustrum vulgare	40-60	B	0/1; Cutting; branched; 2 brks	10		0.58			196
	Prunus spinosa	40-60	B	1+1; Transplant - seed raised; branched; 2 brks	15		0.58			294
	Rhamnus cathartica	60-80	B	1+1; Transplant - seed raised; leader with lateral; 3 brks	10		0.58			196
	Ribes uva-crispa	30-40	B	1+0; Seedling; branched; 2 brks	5		0.58			98
	Rosa canina	60-80	B	1+1; Transplant - seed raised; branched; 3 brks	5		0.71			65
	Sambucus nigra	60-80	B	1+1; Transplant - seed raised; branched; 3 brks	10		0.71			131
	Viburnum lantana	40-60	B	1+1; Transplant - seed raised; branched; 2 brks	10		0.71			131
Sub-totals						100%	660			1667
GROUND COVER										
	Hedera helix	30-40	0.5L	Several shoots; 2 brks		916		5		4580
Sub-totals							916			4580
Grand Totals							1576			6282

Key:

B = Bare-rooted and bagged
brks = Minimum no. of breaks or shoots
cc = Root volume in cubic centimetres
D = Diameter or spread
L = Container in litres
M = Mat
R = Root
RB = Root-balled
RC = Root Collar (minimum) diameter in millimetres

ELB = Extra Light Standard
LS = Light Standard
Std = Standard
SS = Selected Standard
HS = Heavy Standard
EHS = Extra Heavy Standard

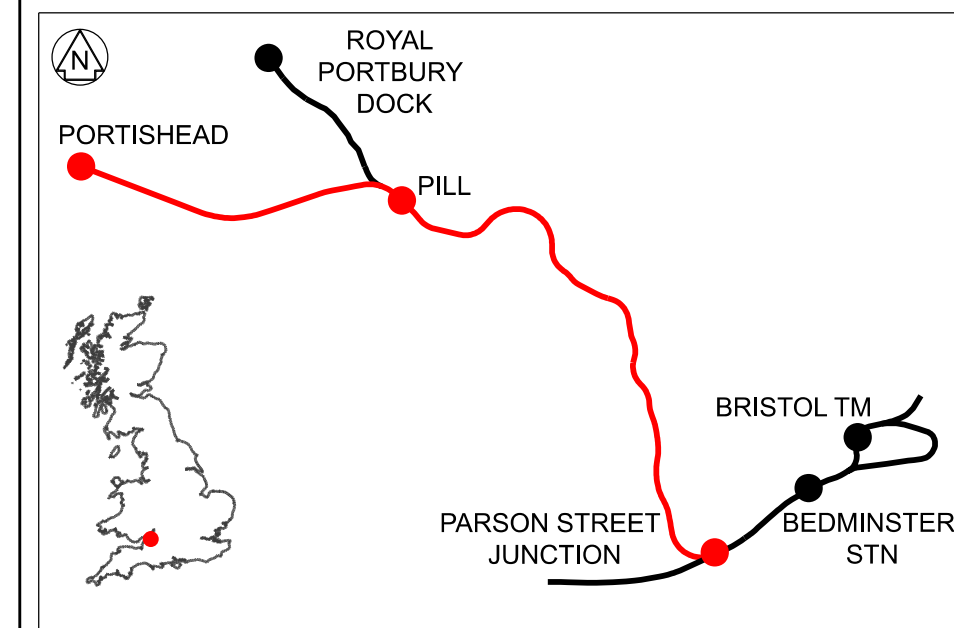
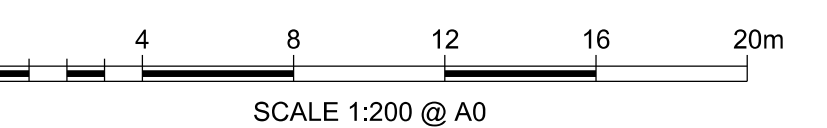
1+1 = 2 year seedling transplanted after year 1
0/2 = 2 year cutting not transplanted
X/0/0 = 2 year graft not transplanted
2x = 2 times transplanted RB = Root-balled
Sept to April = optimum planting period excluding Dec to Feb

Notes: Plant shrubs in random single species groups of 3-11 no. plants with closer centres to the outside of the plot, changing to 1.5m centres. Tree species to be grouped, 3-5no and planted individually. (density 0.44/m²) Outer 2/3 rows to be of shrub species only. Avoid rigid grid pattern. Plant in random single species groups of 3-11 no. plants @ 1.5m centres.

LANDSCAPING PLAN
SCALE 1:200

- LEGEND**
- EXISTING VEGETATION
- PROPOSED:**
- SPECIMEN TREE - SEE PLANTING SCHEDULE
 - NATIVE SHRUB MIX - SEE PLANTING SCHEDULE
 - GRASS MIX - GERMAL AMENITY A19 SEED MIXTURE
 - GROUND COVER - SEE PLANTING SCHEDULE
 - LOOSE GRAVEL OR BALLAST
 - GOLDEN AMBER WITH SINGLE GRANITE SETT EDGE
 - CONCRETE BLOCK PAVING - MARSHALLS MISTRAL PRIORA, HARVEST BUFF, RANDOM COURSE, WITH FLUSH CONSERVATION CHARCOAL KERB
 - CONCRETE BLOCK PAVING - MARSHALLS MISTRAL PRIORA, SILVER GREY, RANDOM COURSE, WITH FLUSH CONSERVATION CHARCOAL KERB
 - BENCH - OLLERTON M3 STAINLESS STEEL SEAT
 - TIMBER POST AND RAIL FENCE 1.2 METRES HIGH
 - TIMBER FENCE - SILVA TIMBER, WESTERN RED CEDAR SLATED SCREENS (MAX. HEIGHT 2 METRES)
 - NETWORK RAIL PALADINE FENCE GREEN POWDER COATED
 - BOLLARDS - OLLERTON TIMBER BOLLARD WITH PYRAMID TOP
 - TREE PIT WITH OLLERTON M3 STAINLESS STEEL GRILLE
 - FOUR LINE AND LEVEL (SEE NOTE 6)
 - DEVELOPMENT CONSENT ORDER (DCO) LAND BOUNDARY
- FOR ENGINEERING WORKS AND MATERIALS SEE DRAWING W1097B-ARP-DRG-EST-300006 AND FOR LIGHTING PROPOSALS SEE DRAWING W1097B-ARP-DRG-EPT-300001
 - ALL PLANTING WORKS TO CONFORM WITH BS 4428, 1989 'GENERAL LANDSCAPE OPERATIONS'.
 - FOR PLANTING DETAILS SEE DRAWING W1097B-ARP-DRG-ECV-300002.
 - PROTECTION OF EXISTING VEGETATION TO BE IN ACCORDANCE WITH BS 8837, 2012 'TREES IN RELATION TO DESIGN, DEMOLITION AND CONSTRUCTION'.
 - ALL TOPSOIL STRIPPED FROM SITE TO BE RETAINED AND RE-USED ON SITE WITHIN PLANTING AREAS.
 - EXACT LOCATION OF BURIED SERVICES TO BE CONFIRMED ON SITE BY CONTRACTOR PRIOR TO ANY LANDSCAPE WORKS.
 - ALL LEVELS ARE IN METRES ABOVE SNARE GRID REEP12 (ORDNANCE DATUM + 100 METRES).
 - CONTRACTOR TO MAKE GOOD AS EXISTING ALL AREAS DISTURBED BY CONSTRUCTION ACTIVITIES.
 - ALL HARD SURFACING AND STREET FURNITURE TO BE AS SPECIFIED OR SIMILAR AS APPROVED.

NOTE: THIS DRAWING IS BASED ON THE ORIGINAL ARUP DRAWING. AMENDMENTS MADE BY NETWORK RAIL FOR 2021 DCO PLANNING APPLICATION.



DESCRIPTION	EXISTING
WATER MAIN	1"
FOUL SEWER	1"
RISING MAIN	1"
SEWER SURFACE	1"
HIGH VOLTAGE ELECTRICITY - BELOW GROUND	1"
LOW VOLTAGE ELECTRICITY - BELOW GROUND	1"
HIGH VOLTAGE ELECTRICITY - ABOVE GROUND	1"
LOW VOLTAGE ELECTRICITY - ABOVE GROUND	1"
GPSS PIPELINE	1"
LOW PRESSURE GAS MAIN	1"
MEDIUM PRESSURE GAS MAIN	1"
HIGH PRESSURE GAS MAIN	1"
BT CABLE - BELOW GROUND	1"
BT CABLE - ABOVE GROUND	1"
CABLE & WIRELESS	1"
VIRION MEDIA CABLE - BELOW GROUND	1"

- SAFETY, HEALTH AND ENVIRONMENTAL INFORMATION**
- IN ADDITION TO THE HAZARDS/RISKS NORMALLY ASSOCIATED WITH THE TYPES OF WORK DETAILED ON THIS DRAWING, NOTE THE FOLLOWING RISKS AND INFORMATION.
- CONTRACTOR TO CONSIDER THE HIGH WATER TABLE IN THE PREPARATION OF METHOD STATEMENTS.
 - NOT USED
 - BURIED SERVICES ARE PRESENT ACROSS THE SITE. THE PRECISE POSITIONS OF THESE ARE TO BE VERIFIED BY THE CONTRACTOR PRIOR TO ANY DETAILED DESIGN.
 - ELEVATED LEVELS OF CONTAMINANTS, INTRAVENOUS NEEDLES AND OTHER HAZARDOUS SUBSTANCES MAY BE PRESENT ON SITE.
 - THERE IS LIMITED TOPOGRAPHIC SURVEY AVAILABLE AT THIS SITE AND THE FORM 001 DESIGN IS BASED ON INTERPRETATION OF LIDAR DATA. FULL TOPOGRAPHIC SURVEY REQUIRED PRIOR TO ANY CONSTRUCTION WORKS COMMENCING.

FOR INFORMATION RELATING TO USE, CLEANING AND MAINTENANCE SEE THE HEALTH AND SAFETY FILE. ALL WORKS ARE TO BE CARRIED OUT BY A COMPETENT CONTRACTOR WORKING - WHERE APPROPRIATE - TO AN APPROVED METHOD STATEMENT.

Rev	Date	Description of Revisions	Drawn	Chkd	Appr	Submittal
A02	26/08/19	DCO APPLICATION			JB	RS
A03	10/09/21	NR AMENDMENTS FOR DCO PLANNING APPLICATION	RB	RB	RB	RB

Status: **FIT FOR INFORMATION** S2



Contractor(s):

PORTISHEAD BRANCH LINE (METROWEST PHASE 1)

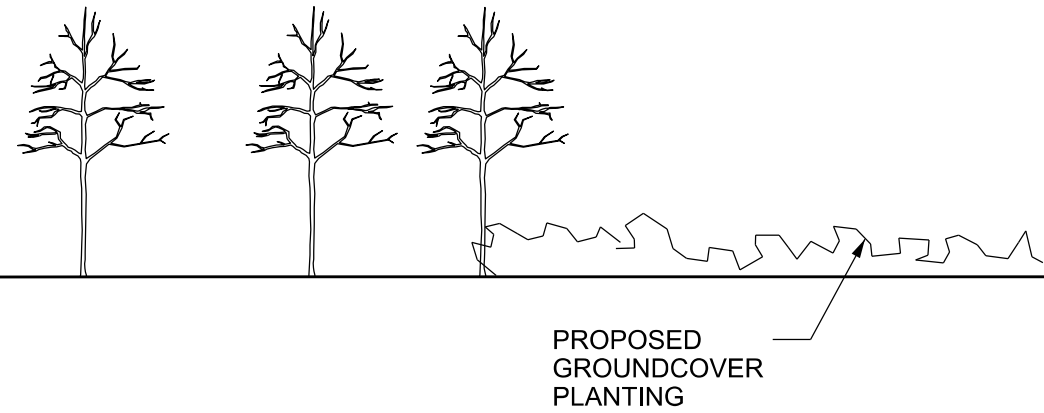
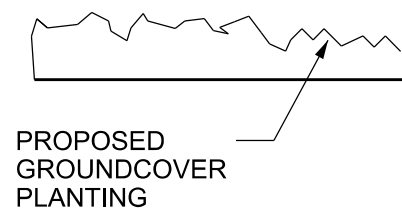
S051 TRINITY FOOTBRIDGE PROPOSED LANDSCAPING GENERAL ARRANGEMENT

Designed	Signed	Date
R. Raj	Signed	10/09/21
Checked	Signed	Date
R. Buckley	Signed	10/09/21
Approved	Signed	Date
R. Buckley	Signed	10/09/21

Scale(s): As Shown POD 129m 06ch

Alternative Reference: 000000-NWR-WST-POD-DRG-ECV-300001 1 of 2

Drawing Number: W1097B-ARP-DRG-ECV-300001 A03

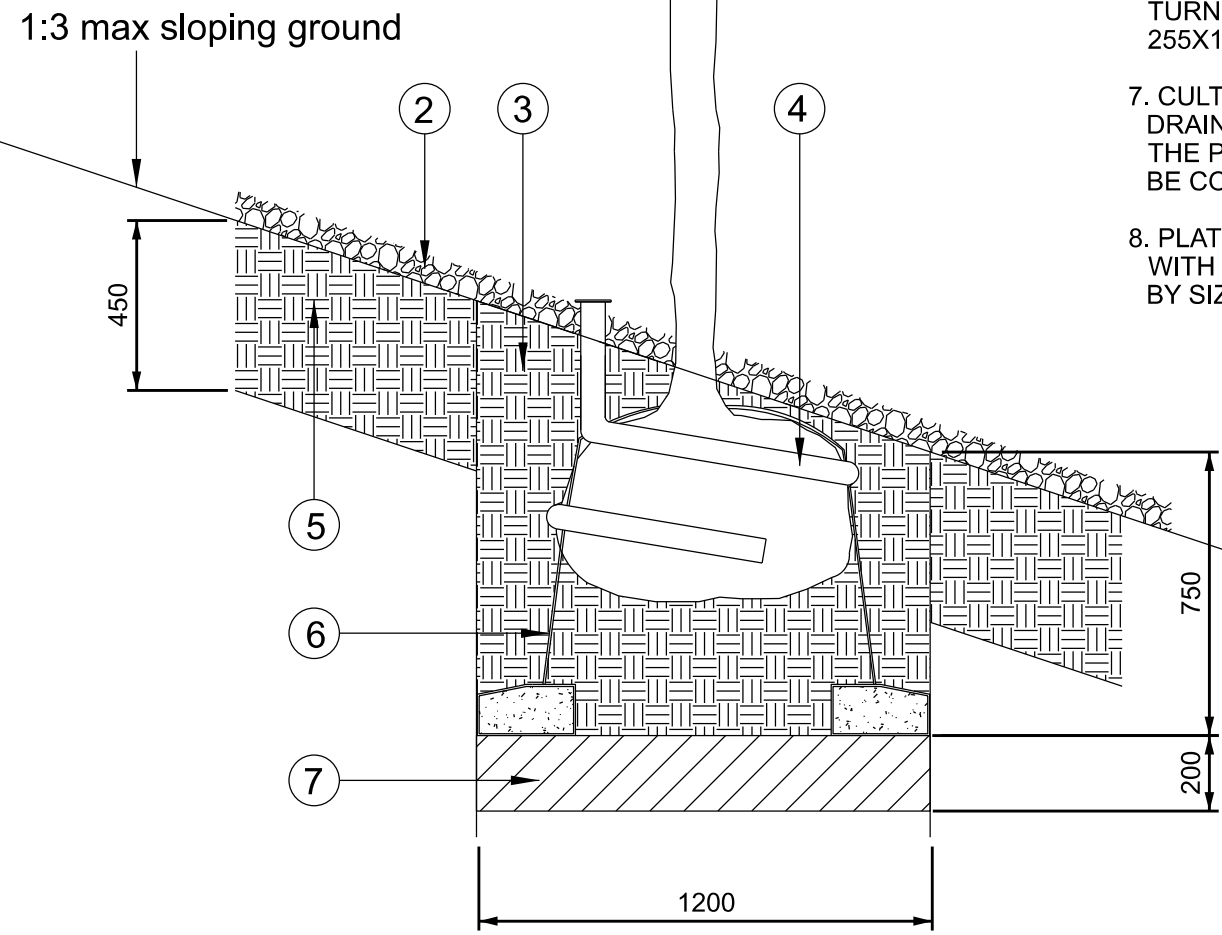


NORTH ELEVATION A

SCALE 1:200

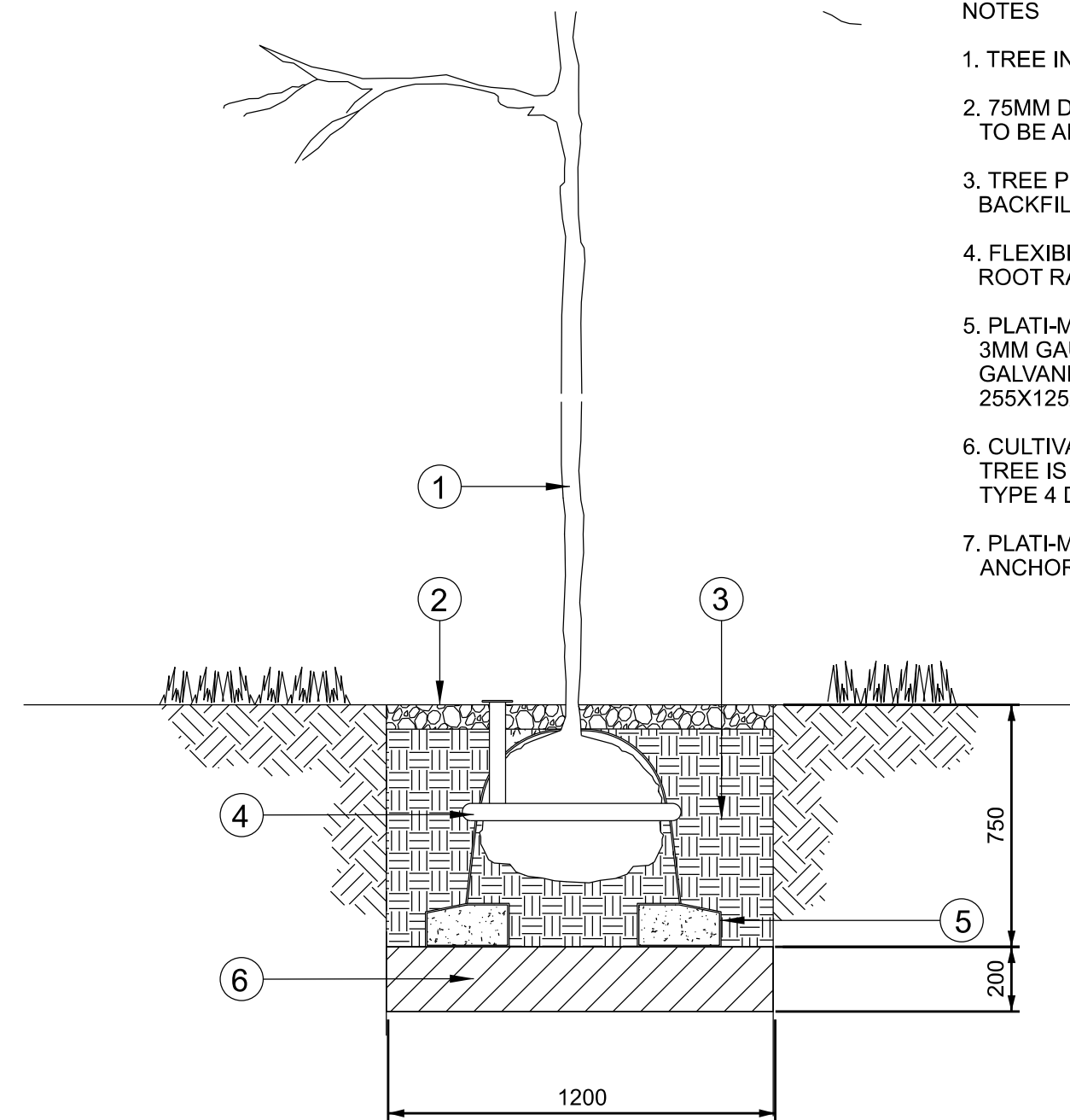
NOTES

1. TREE IN ACCORDANCE WITH THE PLANTING SPECIFICATION. SEE NOTE D.
2. 75MM DEEP ORGANIC BARK MULCH IN SOFT LANDSCAPE AREAS. SAMPLE TO BE APPROVED.
3. TREE PIT TO BE MINIMUM OF 1200 X 1200 X 750MM. PLANTING PIT BACKFILLED WITH 80% TOP SOIL TO 20% COMPOST.
4. FLEXIBLE 35MM DIAMETER PERFORATED IRRIGATION PIPE: GREENLEAF ROOT RAIN WATERER OR SIMILAR APPROVED.
5. 450MM TOPSOIL PLANTING BED FOR ASSOCIATED UNDERSTOREY PLANTING.
6. PLATI-MAT RF1P SYSTEM OR SIMILAR APPROVED: 3NO. GALVANISED STEEL 3MM GAUGE TENSION WIRES AND 4MM GAUGE ANCHOR WIRES WITH GALVANISED STEEL TURNBUCKLES FIXED TO CONCRETE KERB STONE 255X125X900MM.
7. CULTIVATE BASE OF PIT TO 200MM TO ENSURE FREE DRAINAGE. IF THE TREE IS ABOVE OR WITHIN 1 METRE OF THE PREFORATED DRAINAGE PIPE, TYPE 4 DETAIL SHOULD BE COMPLIED WITH.
8. PLATI-MAT TO BE ALIGNED ACROSS THE ROOTBALL IN LINE WITH THE TREE ANCHORS. LENGTH TO BE DETERMINED BY SIZE OF ROOTBALL.



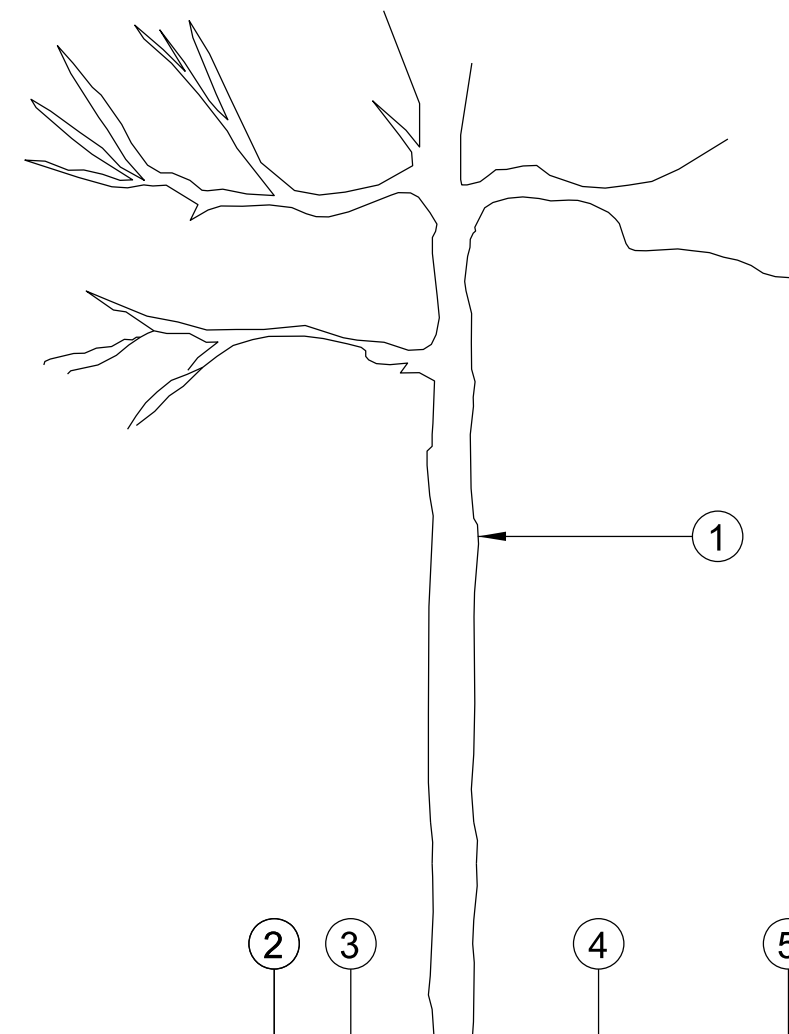
DETAIL 1 - TREE IN SLOPING GROUND

SCALE 1:20



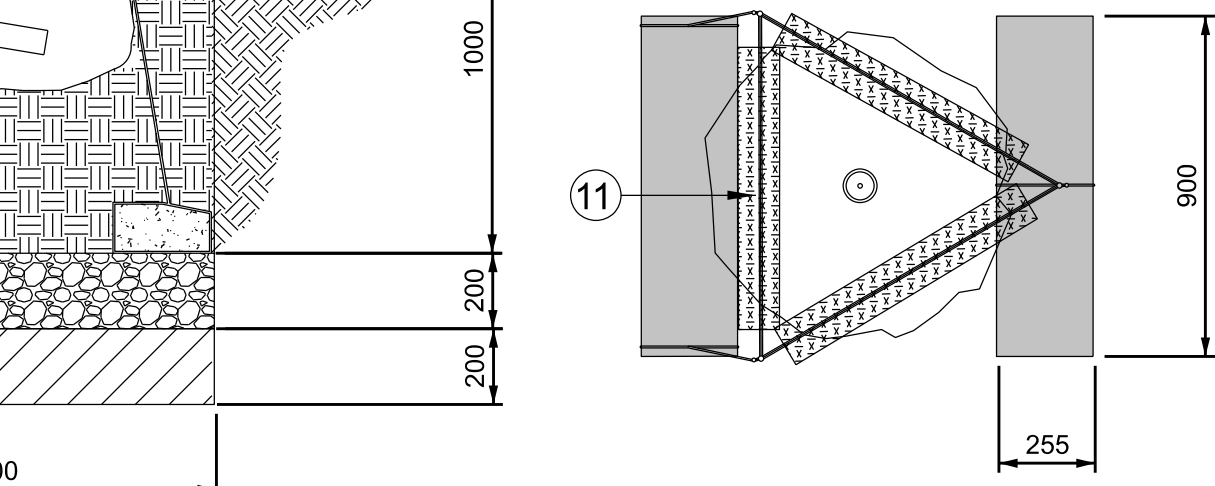
DETAIL 2 - TREE IN LEVELLED SOFT LANDSCAPE

SCALE 1:20



DETAIL 3 - TREE IN HARD LANDSCAPE

SCALE 1:20

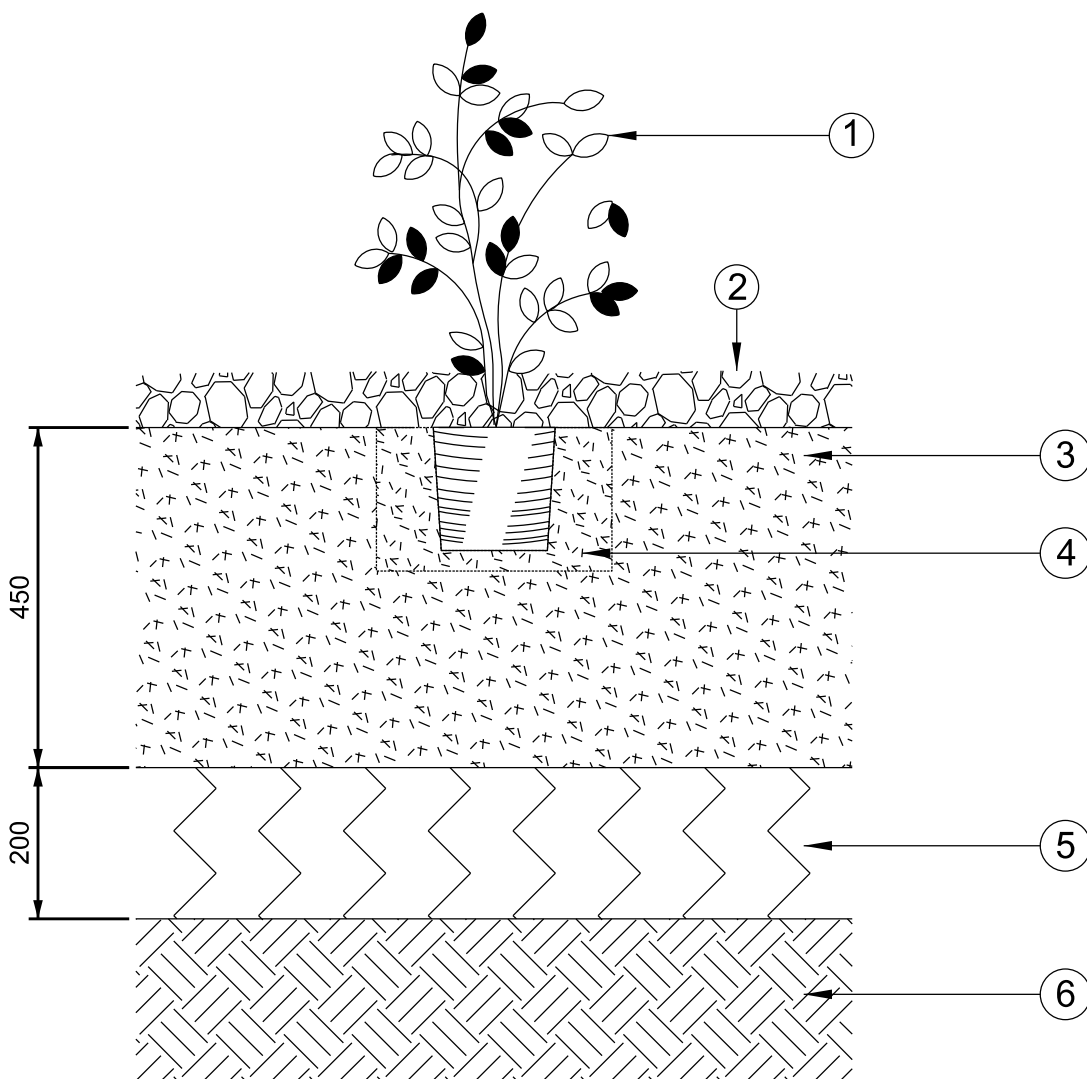


NOTES

1. 20-40MM GRAVEL CLEAN DRAINAGE LAYER.
2. GEOTEXTILE SEPERATION LAYER. GEOTEXTILE TO COMPLY WITH CLAUSE 609 AND SHALL SUSTAIN A TENSILE LOAD OF NOT LESS THAN 3.4KN/M AT 5% STRAIN, DETERMINED IN A "WIDE STRIP" TENSILE TEST CARRIED OUT ACCORDANCE WITH BS6909 PART 1

DETAIL 4 - TREE OVER PERFORATED DRAINAGE PIPE

SCALE 1:20

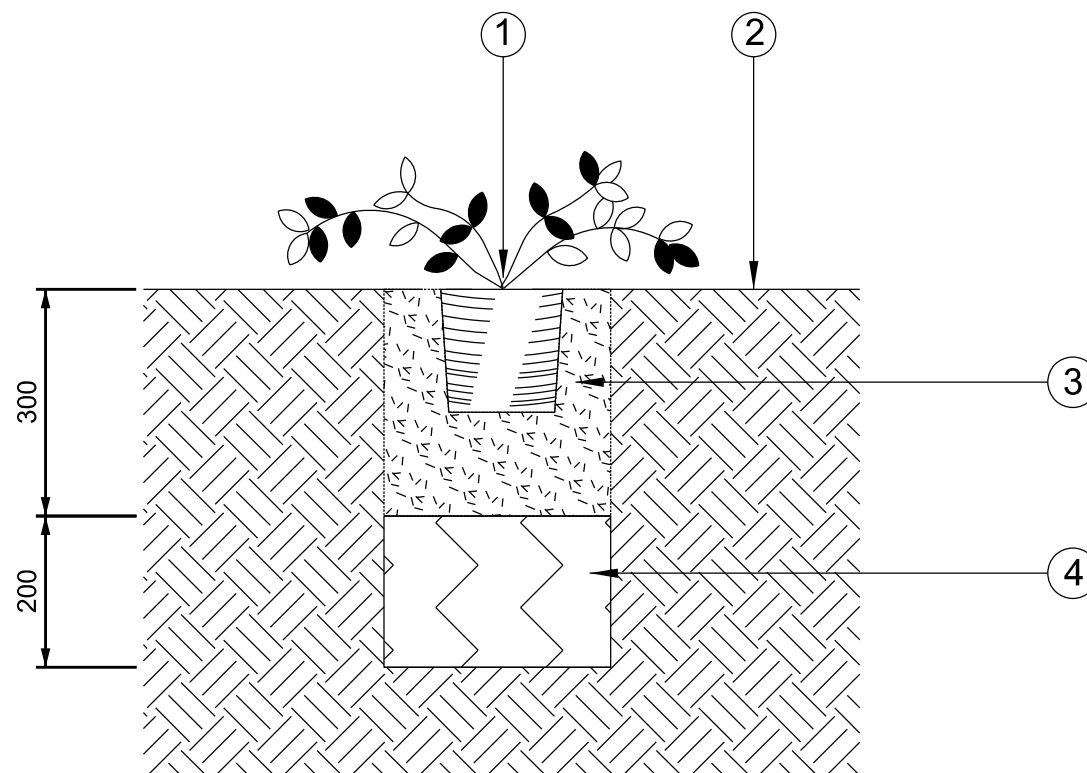


NOTES

1. ORNAMENTAL SHRUB OR GROUNDCOVER PLANT IN ACCORDANCE WITH THE PLANTING SCHEDULE. SEE NOTE D.
2. 75MM DEEP ORGANIC BARK MULCH IN SOFT LANDSCAPE AREAS. SAMPLE TO BE APPROVED.
3. 450MM TOPSOIL PLANTING BED.
4. PLANTING PITS TO BE 150 MM WIDER THAN THE ROOT SPREAD. THE SHRUBS SHALL BE SET IN THE HOLES SO THAT THE SOIL LEVEL, AFTER SETTLEMENT, WILL BE AT THE ORIGINAL ROOT COLLAR LEVEL ON THE STEM OF THE SHRUB. LOOSEN ROOTS AT BOTTOM OF COMPOST GENTLY WITH FINGERTIPS PRIOR TO PLANTING. THE HOLES SHALL BE BACKFILLED WITH 80% TOPSOIL TO 20% COMPOST. TO HALF THEIR DEPTH AND SHALL BE FIRMED BY TREADING. THE REMAINDER OF THE TOPSOIL SHALL THEN BE RETURNED AND AGAIN FIRMED BY TREADING.
5. EXISTING SUB GRADE TO BE RIPPED TO A DEPTH OF 200MM.
6. EXISTING SUB GRADE

DETAIL 5 - SHRUB PLANTING

SCALE 1:10



NOTES

1. GROUNDCOVER OR HERBACEOUS PLANT IN ACCORDANCE WITH THE PLANTING SCHEDULE. SEE NOTE D.
2. EXISTING SOIL/VEGETATED AREAS.
3. PLANTING PITS TO BE DUG INTO EXISTING SOIL 150MM WIDER THAN THE ROOT SPREAD AND 300MM DEEP. THE PLANTS SHALL BE SET IN THE HOLES SO THAT THE SOIL LEVEL, AFTER SETTLEMENT, WILL BE AT THE ORIGINAL ROOT COLLAR LEVEL ON THE STEM OF THE SHRUB. LOOSEN ROOTS AT BOTTOM OF COMPOST GENTLY WITH FINGERTIPS PRIOR TO PLANTING. THE HOLES SHALL BE BACKFILLED WITH 80% TOPSOIL TO 20% COMPOST TO HALF THEIR DEPTH AND SHALL BE FIRMED BY TREADING. THE REMAINDER OF THE TOPSOIL SHALL THEN BE RETURNED AND AGAIN FIRMED BY TREADING.
4. EXISTING SUB GRADE TO BE RIPPED TO A DEPTH OF 200MM.

DETAIL 6 - GROUND COVER PLANTING

SCALE 1:10

Legend/Notes

1. ALL DIMENSIONS ARE IN MILLIMETRES (mm) UNLESS STATED OTHERWISE.
2. ALL LEVELS ARE IN METRES ABOVE SNAKE GRID RBEP12 (ORDNANCE DATUM + 100 METRES).
3. THIS DRAWING SHOULD BE READ IN CONJUNCTION WITH THE CONTRACT DOCUMENTS.
4. REFER TO DRAWING W1097B-ARP-DRG-ECV-300001 FOR PLANTING PLAN AND SCHEDULE.

NOTE: THIS DRAWING IS BASED ON THE ORIGINAL ARUP DRAWING. AMENDMENTS MADE BY NETWORK RAIL FOR 2021 DCO PLANNING APPLICATION.

0 200 400 600 800 1000mm

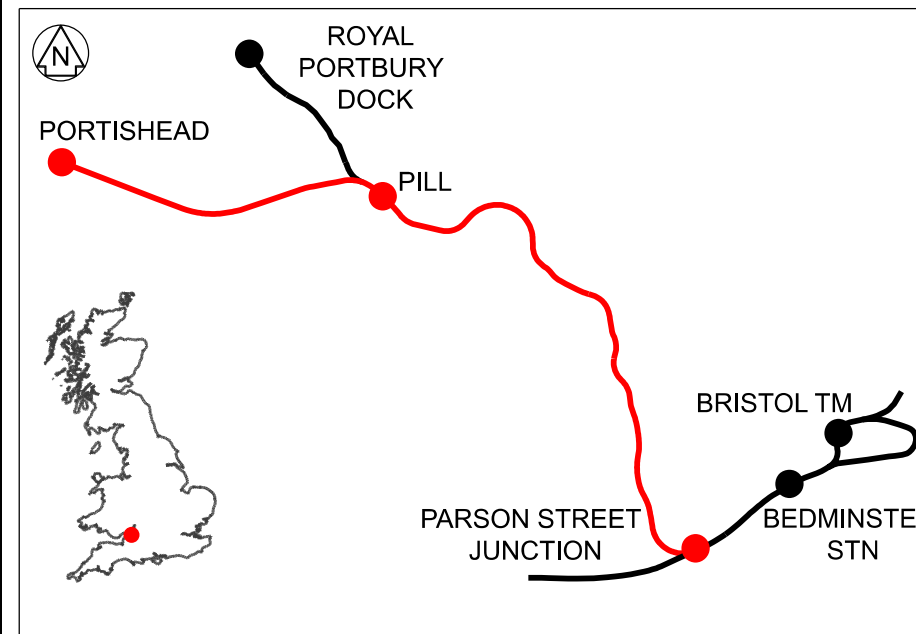
SCALE 1:10 @ A1

0 0.4 0.8 1.2 1.6 2.0m

SCALE 1:20 @ A1

0 4 8 12 16 20m

SCALE 1:200 @ A1



A01	23/07/19	FOR DCO APPLICATION	JB	RS	RS
A02	20/09/19	FOR DCO APPLICATION	JB	RS	RS
A03	10/09/21	NR AMENDMENTS FOR DCO PLANNING APPLICATION	RR	RB	RB
Rev	Date	Description of Revisions	Drawn	Chkd	Appr
Status					Suitability
FIT FOR INFORMATION					S2



Contractor(s)

Project
PORTISHEAD BRANCH LINE
(METROWEST PHASE 1)

Drawing Title
S051 TRINITY FOOTBRIDGE
PROPOSED LANDSCAPING
GENERAL ARRANGEMENT

Designed	-	Signed	Date	-
Drawn	R. Raj	Signed	Date	10/09/21
Checked	R. Buckby	Signed	Date	10/09/21
Approved	R. Buckby	Signed	Date	10/09/21

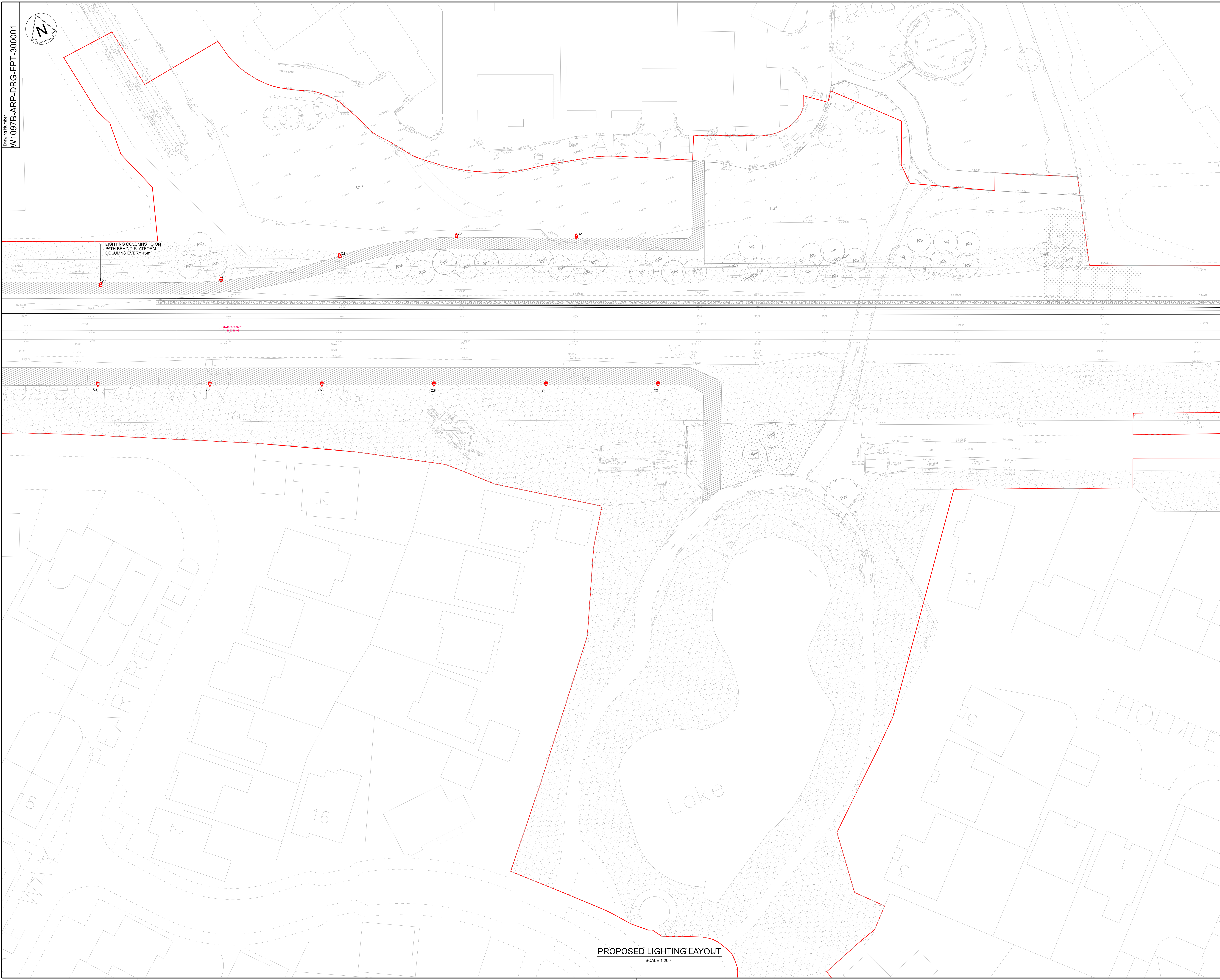
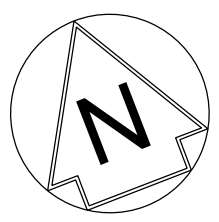
Scale(s)
As Shown
ELR & Mileage
POD 129m 06ch

Alternative Reference
000000-NWR-WST-POD-DRG-ECV-300002
Drawing Number
W1097B-ARP-DRG-ECV-300002

Sheet
2 of 2

Revision

Drawing Number
W1097B-ARP-DRG-EPT-300001



PROPOSED LIGHTING LAYOUT
SCALE 1:200

Legend/Notes

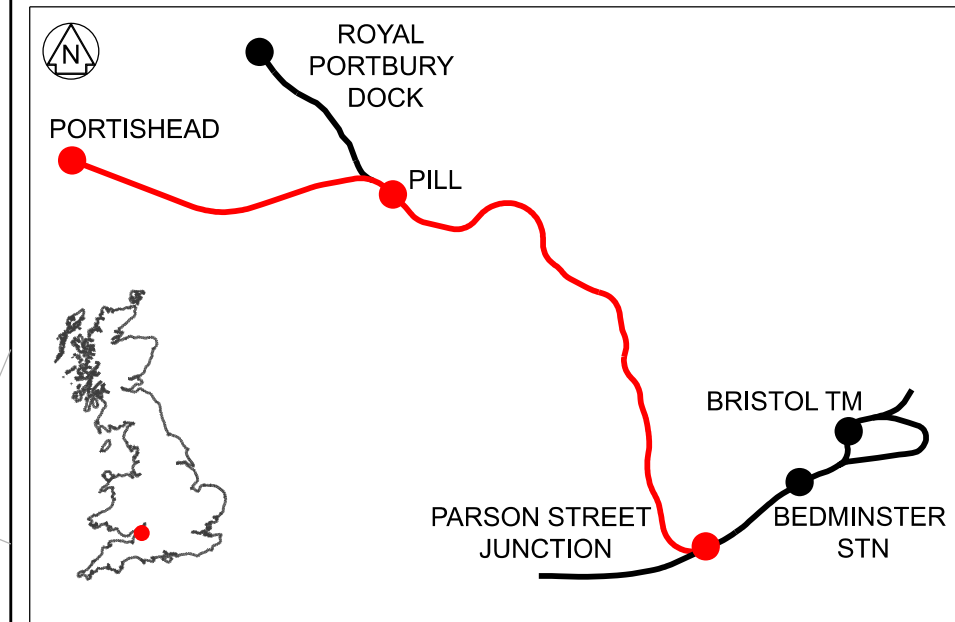
- NOTES
1. THIS IS NOT AN INSTALLATION DRAWING.
 2. DRAWINGS SHOULD NOT BE SCALED, ONLY FIGURED DIMENSIONS ARE TO BE USED.
 3. LIGHTING CONTROL SHALL INCLUDE A PHOTOCELL, TIMER AND MANUAL OVERRIDE SWITCH. THE PHOTOCELL SHALL BE MOUNTED ON THE GUBICLE. CARE SHALL BE TAKEN WHEN SITING THE PHOTOCELL TO ENSURE FALSE OPERATION FROM OTHER LIGHT SOURCES.
 4. PRESENCE DETECTORS WILL CONTROL THE EXTERNAL LUMINAIRES, DIMMABLE ON NON-OCCUPANCY TO A PRE-SET LEVEL.
 5. CABLE ROUTES TO BE CONFIRMED ON THE NEXT STAGE.

LEGEND

— DEVELOPMENT CONSENT ORDER (DCO)
— LAND BOUNDARY

NOTE: THIS DRAWING IS BASED ON THE ORIGINAL ARUP DRAWING. AMENDMENTS MADE BY NETWORK RAIL FOR 2021 DCO PLANNING APPLICATION.

0 4 8 12 16 20m
SCALE 1:200 @ A0



Rev	Date	Description of Revision	Rev	Rev
A01	18/07/19	FOR DCO APPLICATION	JB	RS
A02	10/09/21	NR AMENDMENTS FOR DCO PLANNING APPLICATION	RR	RB
Status	FIT FOR INFORMATION		Subsidiary	S2



Contractor(s)

Project
PORTISHEAD BRANCH LINE
METROWEST PHASE 1

Drawing Title
S051 TRINITY FOOTBRIDGE
PROPOSED ELECTRICAL LAYOUT
GENERAL ARRANGEMENT

Designed	-	Signed	-	Date	-
Drawn	R.Raj	Signed	-	Date	10/09/21
Checked	R.Buckby	Signed	-	Date	10/09/21
Approved	R.Buckby	Signed	-	Date	10/09/21

Scale(s)
1:200
Alternative Reference
000000-NWR-WST-POD-DRG-EDS-300001
Drawing Number
W1097B-ARP-DRG-EPT-300001
Sheet
1 of 1
Revision
A02